

For Lease

2429 109TH STREET
GRAND PRAIRIE, TEXAS 75050



Break Area



Production Area

PROPERTY INFORMATION

- 14,606 +/- SF Available
- 2,000 +/- SF Office Space
- 4,000 +/- SF High Bay Production Area
- Production Area 100% HVAC
- 16' +/- Clear Height
- 2 Dock Highs Doors
- Grade Level in Rear of Building
- 29,484 +/- Total Building SF
- YOC 1985

For More Information Contact:



2711 LBJ Freeway
Suite 130
Dallas, Texas 75234
(972) 991-1625
(214) 853-5349

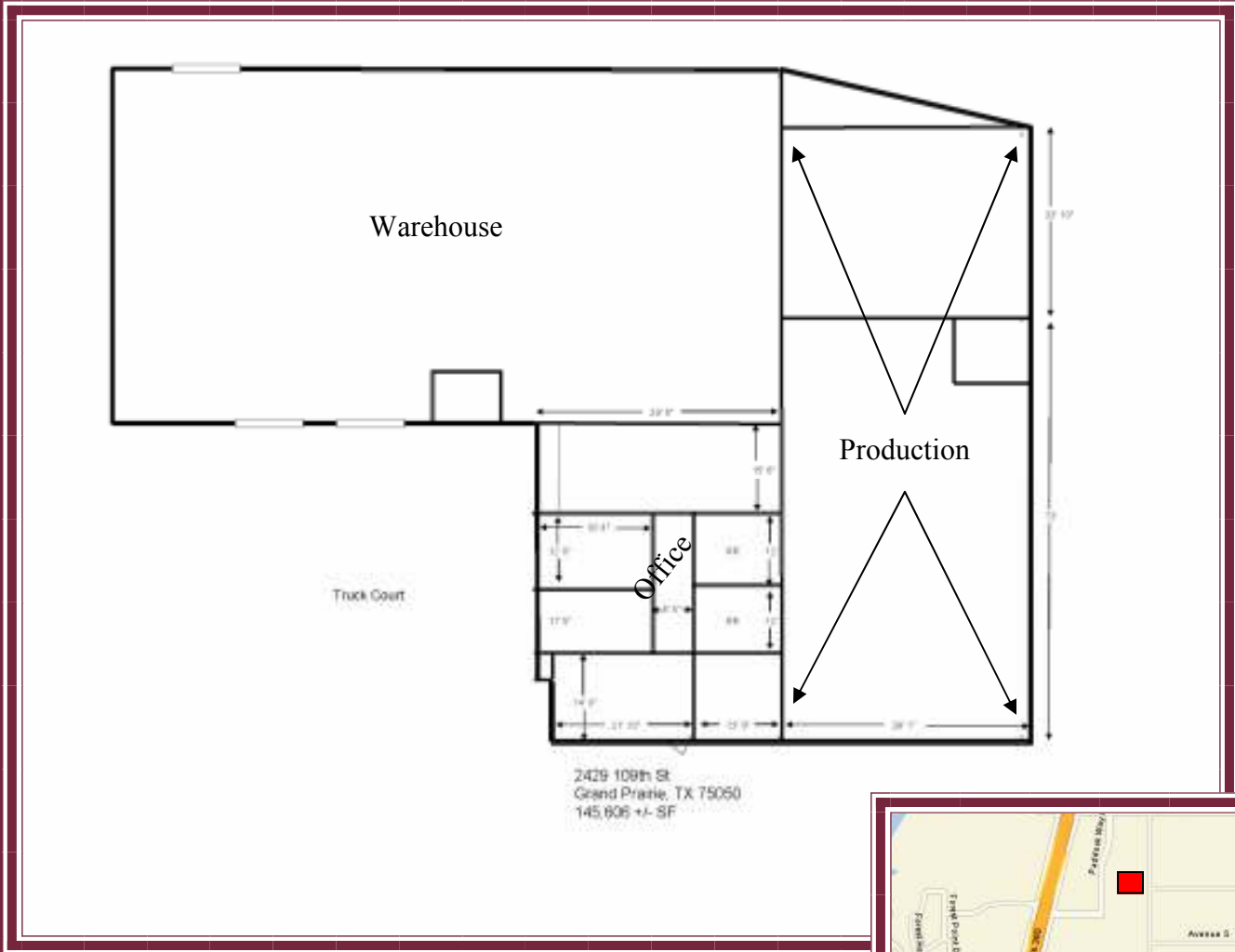
Bill Bexley
bbexley@jscopy.com

214-850-2955 mobile
972-991-1625 office

www.dallasindustrial.com

For Lease

2429 109TH STREET
GRAND PRAIRIE, TEXAS 75050



For More Information Contact:

Bill Bexley
bbexley@jscopy.com

214-850-2955 mobile
972-991-1625 office

www.dallasindustrial.com

